

Netaphor SiteAudit™ Solutions for Auditing and Fleet Management

Hybrid Office Fleet Management

SiteAudit OnSite v8 brings auditing and fleet management to a new level by leveraging its data collection power, platform integration and visualization tools to enable more analytical and proactive fleet services to partners and end customers.

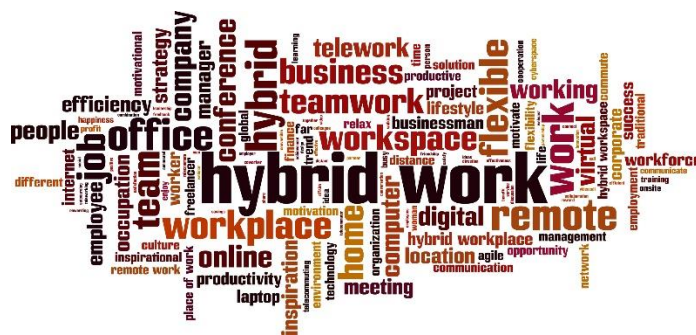
SiteAudit v8.x adds support for local printer tracking, in particular Zebra devices. Additionally, Netaphor has enhanced its ServiceNow Connector with a new desktop application and performance enhancements.

www.netaphor.com

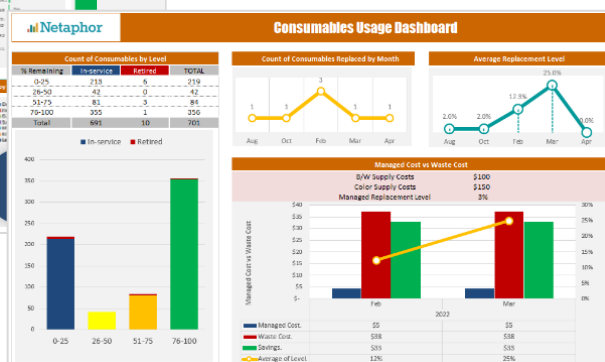
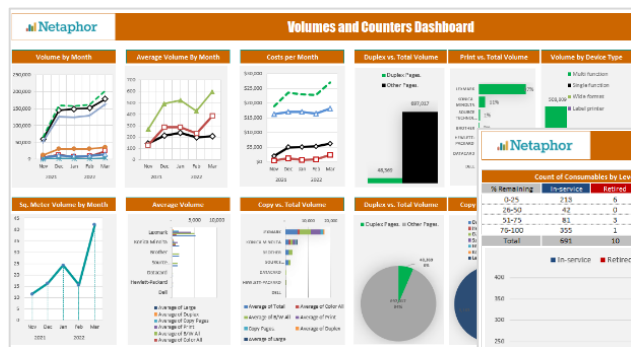


SiteAudit OnSite provides the hybrid workplace complete fleet management to reduce cost & improve service performance.

- Data Stays Inside the Firewall
- Mixed Fleet Management
- Metering & Supplies Tracking
- Fleet Analytics & Reporting
- Security Reporting & Alerting
- Cost Management
- Sustainability Reporting



- Solution for the Hybrid Work Environment
- Manage both Remote and Corporate Devices
- Report Remote Device Inventory & Volume
- Alert on Remote Device Supplies & more



Use [SiteAudit Analyzer](#) to trend volume, supplies or analyze device utilization and more to report on critical fleet metrics.



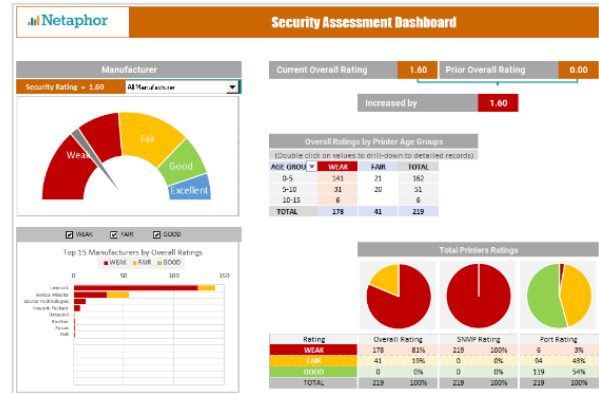
www.netaphor.com

Netaphor SiteAudit OnSite v8.x Solution



SiteAudit ServiceNow Connector integrates SiteAudit data with critical business applications like automating tickets to reduce costs.

Security Assessment



SiteAudit security assessment identifies device Vulnerabilities and rates the overall threat level.

PLATFORMS

Supported Products

SiteAudit OnSite v8.x

Platforms

Windows 11; Windows Server 2019, & Windows Server 2022

MS SQL Express & Server 2019 & 2022

Support for IPv4 & IPv6

.NET4.8 or later

Microsoft Certified

Certified for server and client software

"So for organizations that need to manage hundreds to thousands of devices in great detail, Netaphor SiteAudit is well worth the investment." - Buyers Lab 2020 Pick Award, Outstanding Assessment & Fleet Management Solution

Key Managed Print Capabilities

- Manage **hybrid work environments** including device inventory, volume, supplies and incidents
- **Inventory:** tracks Moves, Add & Changes (iMAC/R) SFD, MFD, label printers; wide format, local and networked and some desktop scanners
- **Billing:** tracks 28 separate meters for billing and device utilization
- **Supplies Replenishment:** tracks levels, yields and replacement metrics
- **Service performance:** uptime and downtime tracking, response time
- **Alerting:** rules-based standard & custom, security & MAC event alerting; supplies, counter, availability, and SLA thresholds alerts
- **Reporting:** 70 reports, web reports and unlimited custom reports
- **Visualization:** charts and graphs from inventory to security and more
- **Connectors to ServiceNow and other ERP and ITSM applications**



ISV/Software Solutions



2025NETAPHOR SOFTWARE, INC.

All trademarks, trade names, service marks and logos referenced herein belong to their respective companies.
Pick Award, Buyers Laboratory LLC USA 5.2025



MPSA
MANAGED PRINT
SERVICES ASSOCIATION

Netaphor Software, Inc.
Netaphor SiteAudit 5.0
Outstanding Fleet Management Solution

Netaphor Software, Inc.
SiteAudit 6
Outstanding Fleet Management Solution

Corporate office:
Lake Forest, California USA
Contact: 1 949 470 7955
www.netaphor.com

